

Your neighbourhood in Statistics!

Some questions in our synodal process concern those to whom the Holy Spirit will send us. Parishes, missions, communities and movements, etc., might analyze the demographics in their territory and neighbourhood in order to support their discernment activities.

At the more local level, the main objectives of this exploratory research are:

- 1 - To look at the statistics and the community groups in your parish/mission in order to get a sense of who your parish/mission **is serving and could be serving**
- 2 - To find out which organizations your parish/mission could **form partnerships** with, towards the common goal of serving your community.
- 3 - To learn **what is on people's minds and in their hearts** at the neighbourhood level, in order to then see how, as a parish/mission, you can lend assistance.

Exploring your Parish/Mission and Neighbourhood:

Who are the people in your parish/mission and neighbourhood - what are the age groups, family structures, income levels, ethnic origins etc.?

Which community organizations are represented in and around your parish/mission? What services do they offer the community and how can your parish/mission collaborate with them?

Here are some links to help you start your research in order to answer these:

If your parish/mission is in one or more of the 19 boroughs or 14 municipalities of MONTREAL*:

- [City of Montreal Statistical Profiles](#)¹ - by electoral riding as well, for more detailed information (French)
- there is also an [Atlas Sociodemographiques](#)² that you can visit by borough/municipality (in French)
- [Observatoire Grand Montréal](#) (municipalities only - not boroughs)³ (in French)
- [Centris.ca Community Profiles](#)⁴ - Montreal Island
- [Montreal Island Directory of Community Organisations](#)⁵ - by Centraide - download the PDF document for your borough/municipality or find it on a map

If your parish/mission is in one or more of the 13 (old) LAVAL municipalities, or if you serve all of Laval*:

- [Centris.ca Community Profiles - Laval](#)⁶
- [Observatoire Grand Montréal](#)³(in French) serves all of Laval as one profile
- [Laval Directory of Community Organisations](#)⁷ - by Centraide - download the PDF document for your borough/municipality or find it on a map

If you are in ASSOMPTION, REPENTIGNY, ST-SULPICE or CHARLEMAGNE (no English parish)*:

- [Observatoire Grand Montréal](#)³ (in French) by electoral ridings also, for more information
- [Centris.ca Community Profiles - Montreal North Shore](#)⁸

¹ City of Montreal Statistical Profiles: <https://tinyurl.com/5eynr67f>

² Atlas Sociodemographiques: <https://tinyurl.com/4nd55vrw>

³ Observatoire Grand Montreal: <https://tinyurl.com/5744ffcv>

⁴ Centris.ca Profiles – Montreal: <https://tinyurl.com/bc9rcxcd>

⁵ Centraide Directory – Montreal: <https://www.211qc.ca/en/directory/montreal>

⁶ Centris.ca Profiles – Laval: <https://tinyurl.com/ce9jsypx>

⁷ Centraide Directory – Laval: <https://www.211qc.ca/en/directory/laval>

⁸ Centris.ca Profiles – North Shore: <https://tinyurl.com/y859u8jj>

- [MRC of Assomption Community Organizations Directory](#)⁹ - by Centraide - download the PDF document for your borough/municipality or find it on a map

You can explore your parish/mission and neighbourhood further by checking out:

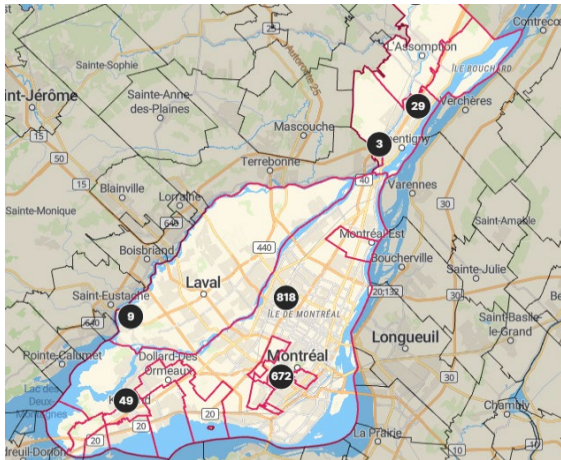
- Your parish's/mission's **Borough(s)/Municipality(ies) official website(s)**
- **Facebook Groups and Pages** that deal with your municipality(ies) or borough(s) - both formal and informal ones! Maybe share as needed or desired, once protocols have been established with your pastoral team (e.g., no political posts should to be shared, aside from general information; COVID-19 and emergency information; general events/info etc...)
- **Round Tables (Tables de concertation) in your area** that work on various community issues such as food assistance, shelter/housing, environment, etc. You can learn more about round tables [here](#)¹⁰.

⁹ Centraide Directory – MRC Assomption: <https://www.211qc.ca/en/directory/lanaudiere/mrc-lassomption>

¹⁰ Round Tables Coalition - <http://www.tablesdequartiermontreal.org/the-neighbourhood-round-tables-coalition/>

The Diocese of Montreal in Statistics!

The following information is based on data from the 2016 Census compiled by Statistics Canada and aggregated by Census Subdivisions (see map below) by an online program developed by WayBase.com



Map courtesy of Waybase.com / numbers indicate Christian listings

The Archdiocese of Montreal comprises three regions: 1) The Island of Montreal - made up of 14 municipalities and 19 boroughs; 2) the municipality of Laval and 3) the municipalities of Charlemagne, l'Assomption, Répertigny and Saint-Sulpice (see map). Within these three regions are 194 parishes, missions and sanctuaries which together serve 2.48 million people, dwelling in 1.08 million households.

Of the latter, the majority (52.3%) are single-person households, followed by households with children (37.5%). Of these, 25.9% are single-parent households. As for couples, 30.7% of the adult population are married and 11.9% are in a common-law relationship, while 7.9% are divorced or separated.

In terms of languages spoken at home, 59% of households speak French, 22% speak English, with 18% speaking other languages at home, the most prevalent being Spanish, followed by Italian, Mandarin, Romanian, Greek, Vietnamese, and Creole.

Most of the population identifies as Christian (68.8%), and within this group 80.1% identify as Catholic. The next largest group after Christians is the group that identifies as having no religious affiliation (16.1%).

A few more facts about our sisters and brothers living in the Archdiocese of Montreal:

- The most prevalent occupations are in the healthcare and social services sector, followed by retail trade and the professional, scientific and technical services sectors.

- The overall average gross household income in the Archdiocese is \$78,500. *It should, however be noted that 19% of households (nearly 1 in 5) are at low-income level or below the poverty line*. Among children 0 to 5 years old, 20.3% (1 in 5) are living in low-income households; among those 65 years and older, 19.4% (again, nearly 1 in 5) are living in low-income households.

- A large number of people have received a university education (45.0%), followed by those with a high school diploma (21.1%) and trade certificates (15.3%). It should be noted that 13.1% of the population have no certificate, diploma or degree.